

## RCS Rail Climbing System

### The universal modular system

#### **Secured**

As formwork scaffolding or climbing protection panel – always guided using rails mounted on the building

#### **Flexible**

The climbing shoe can be attached to the walls as well as to slab edges

#### **Variable**

Adaptable to a wide range of construction site requirements through the modular system with a regular hole arrangement



**Formwork  
Scaffolding  
Engineering**

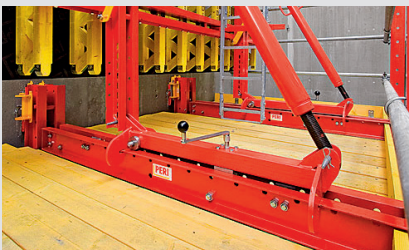
[www.periqatar.com](http://www.periqatar.com)

# RCS Rail Climbing System – The universal modular climbing system for a wide range of applications

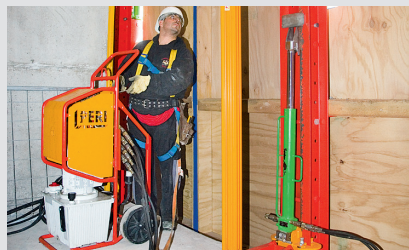
PERI RCS climbing combines the advantages of different systems in a modular system that makes the easy adaptation to site-specific requirements possible. Rail-guided climbing takes place quickly and safely by crane also in windy conditions or, as an option, crane-independently with mobile climbing hydraulics.

- Rail-guided, safe climbing procedure
- 125 mm hole arrangement in the rails for aligning the platforms to suit the height of the storey
- Building authority approved standard anchoring for walls and slabs; if required, also with a horizontally arranged climbing rail for varying cantilevers
- Optional self-climbing in 50 cm increments with mobile self-climbing devices
- Landing platform for temporary storage of materials and for moving loads with the crane

- **RCS C Formwork Scaffolding**  
as standard use for supporting wall formwork for storey heights of 2.70 m to 4.50 m; with carriage (90 cm retraction distance)
- **RCS CL Light Climbing Formwork**  
for external facades and cores in advance of medium-height buildings leading with limited crane capacities and times
- **RCS P Climbing Protection Panel and Guardrails**  
enclosure and guardrails provide gap-free protection for work carried out on the building shell floors



The formwork is securely mounted on the carriage and can be retracted by 90 cm without the use of the crane. Due to the roller bearings, it is easy to operate as well as being jerk-free.



Both system variants – formwork scaffolding and climbing protection panel – can also be climbed by means of mobile hydraulic units, and thus crane-independent.



TRIO panel formwork can also be used with the RCS climbing system.



**PERI Qatar LLC**  
**Formwork Scaffolding Engineering**  
New Industrial Area  
Zone 81, St. 9, Bldg. 51  
P.O.Box: 31295  
Doha – Qatar  
Tel. +974 4411.4816/7  
Fax +974 4411.4348  
info@periqatar.com  
www.periqatar.com